



Response to consultation

The consultation phase of the Tasmania *Tomorrow* initiative commenced soon after its release in June. A significant amount of feedback has been received since then from stakeholders about the proposed model.

All feedback received during the general consultation phase will be analysed and a response is being prepared which will provide clarity regarding the way forward. This response will be available in mid November.

Although the general consultation phase for the proposal has now concluded, structured feedback into the implementation will continue through the individual working groups.

Submissions

Submissions from various organisations including colleges, AEU, University of Tasmania and others have been received as part of the general consultation process. The submissions are now publicly available and can be viewed at:

<http://tomorrow.education.tas.gov.au/consultation>

Local Advisory Panels

Six local advisory panels have been established to provide local community input into decisions regarding site selection for the new organisations. The panels are a critical step in the consultation process as they will ensure that local communities have a say in how the Tasmania *Tomorrow* initiative will work at a local level.

The panels met during October to discuss where campuses of the polytechnic, academy and training enterprise should be located in each region. They will report these recommendations directly to the Minister.

The panels are chaired by local government mayors and include representatives from a broad section of the local education and training community including: colleges, TAFE Tasmania, school associations, Tasmanian Principals Association, Tasmanian State Schools Parents and Friends, Area Taskforces, industry, Parliament, the Logistics Working Group. Individual membership details for each panel is available at:

<http://tomorrow.education.tas.gov.au/implementation/LAP-Membership.pdf>

2007 Agricultural Shows

The Tasmania *Tomorrow* initiative was the theme of the Department of Education stand at the Hobart, Launceston and Burnie shows this year. This provided an opportunity to raise general community awareness about Tasmania *Tomorrow* and the need to improve outcomes for Tasmanians.

Thanks to the volunteers who gave up their time to staff the stand and provide the public with information about the initiative.

Also, congratulations to Bridie Coert, a Year 8 student from Riverside High School who had the first correct entry drawn in the competition to win an iPod. Along with several hundred other entries, Bridie correctly answered all five questions about the Tasmania *Tomorrow* initiative.

Working group progress

Working groups have been established to develop specific aspects of the Tasmania *Tomorrow* initiative. These groups will make recommendations to the steering committee, who in turn will advise the Minister. The chart on the following page shows the structure of the working groups. The majority of these working groups are now underway. Full membership details for each group are available at:

<http://tomorrow.education.tas.gov.au/implementation>.

The following provides an update on the progress of the current working groups.

Educational Programs Working Groups

- **Academy** – This group held its first meeting on 10 October and will meet again on 14 November. Progress to date has taken the form of general discussion on issues and future considerations to be addressed for the academy's educational program.
- **Polytechnic** – This group has met twice with a further meeting scheduled for 7 November. It has spent time discussing its scope and progress, and received presentations on the PY10 curriculum, the Training Package environment at TAFE Tasmania, and its approach to learning support and general education issues.
- **Training Enterprise** – This group will hold its first meeting on 13 November.

Employee Relations Working Group

The next meetings of this group are scheduled for 9 and 14 November. This group is looking specifically at the employment conditions associated with the new organisations.

Working Group Progress (continued)

Logistics Working Group

This group met on 18 October 2007 in preparation for the commencement of the six regional local advisory panels in the following week. The group viewed and provided feedback on the data and options which were to be presented to the panels.

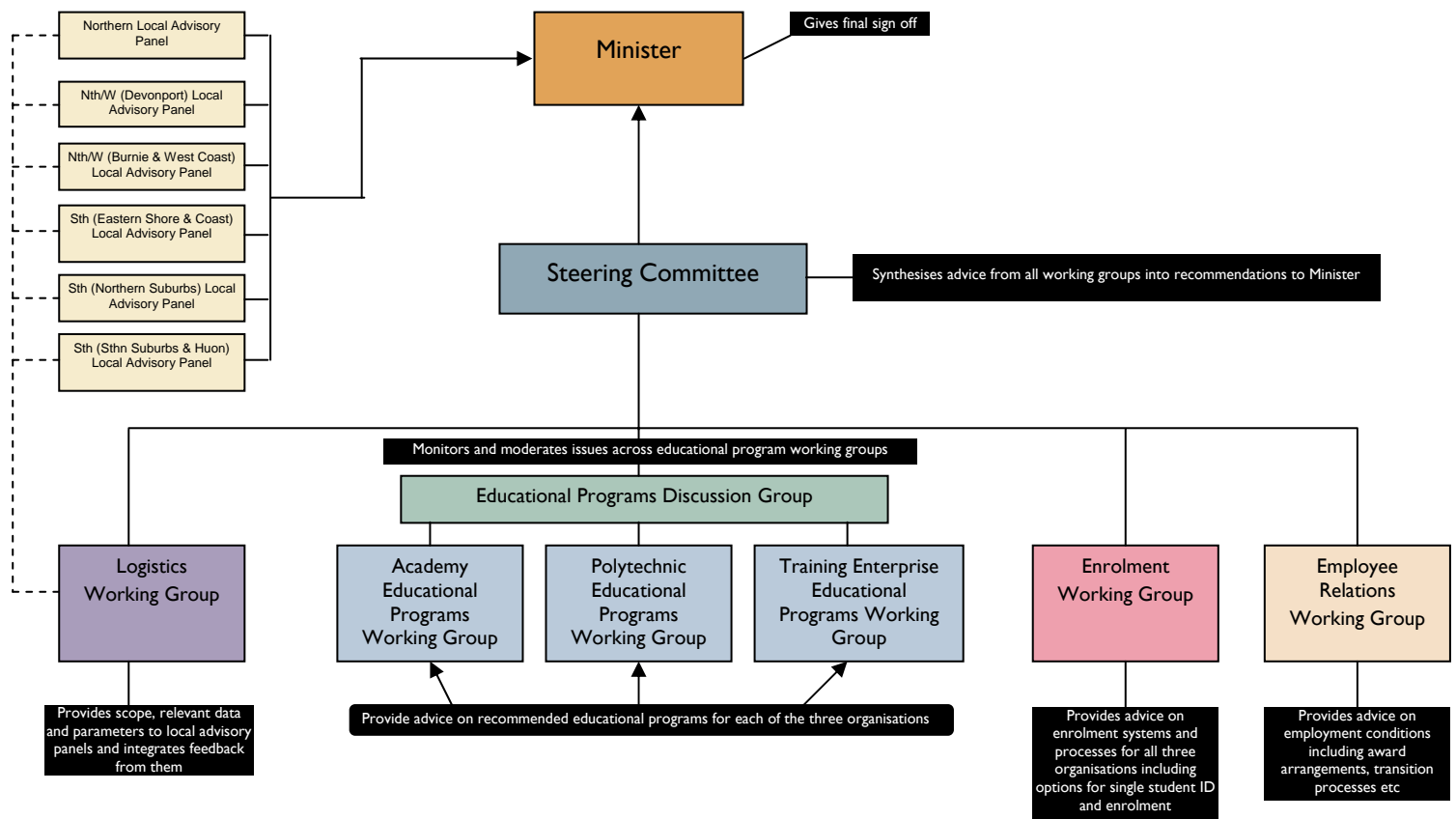
- **Local advisory panels** – all six panels have now met: Northern, North Western (Burnie and West Coast), North Western (Devonport), Southern (Southern Eastern Shore and Coast), Southern (Southern Suburbs and Huon) and Southern (Northern Suburbs). The chair of each panel will report their recommendations directly to the Minister.

Enrolment Working Group

This group has now met twice. It is currently analysing enrolment processes in the current structures to support development of processes and systems in the new organisations. The group's intention is to provide options for a comprehensive, client focussed enrolment system for all three new organisations.

Working Group Structure

Panels provide recommendations to the Minister on community views and needs in relation to establishing campuses of the three organisations in each region



CONTACT DETAILS

Tel: 1800 469 997

Email: tomorrow@education.tas.gov.au

Web: <http://tomorrow.education.tas.gov.au>



Tasmania
Explore the possibilities