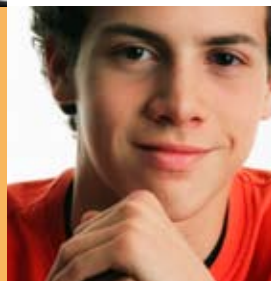
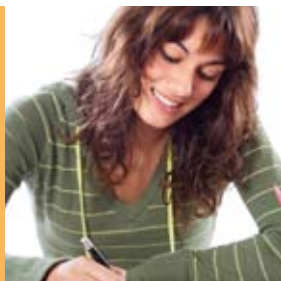


Tasmania *Tomorrow* Polytechnic Education Conference 2008

## THE NEW POLYTECHNIC EDUCATION - **why? what? how?**



Bellerive Oval Conference Centre  
Thursday 8 and Friday 9 May 2008

*Qualifications and Skills for Tasmania Tomorrow*

## FROM THE CHAIR

Dear Delegate

It is my pleasure to welcome you to the first Polytechnic Education Conference, presented by the Tasmania *Tomorrow* initiative.

The conference will explore with you the concept of polytechnic education and the opportunities it will offer its students, the community and Tasmanian businesses. It will also outline current thinking and progress towards implementation in Tasmania.

It is a forum for you to contribute your ideas on how the concept can be applied and expanded, and a chance for you to interact with colleagues and other interested parties.

This conference is designed to inform you, stimulate your ideas, excite and motivate you. It is a unique learning experience which I anticipate will be both enjoyable and educative.

Best wishes

**Dr Michael Vertigan, AC**  
**Chair, Tasmanian Polytechnic Board**



## KEYNOTE SPEAKERS AND PRESENTERS



**David Bartlett** was elected for the first time in April 2004, David Bartlett MHA is the Labor member for Denison in the Tasmanian State Parliament. Following his re-election in March 2006, he was appointed to the position of Minister for Education. In April 2008, he was appointed to the position of Deputy Premier of Tasmania, Minister for Education and Skills, and Minister for Planning and Workplace Relations.

Prior to entering the Parliament David had an extensive career in the information technology industry and the public sector. Most recently David served as Senior Private Secretary to the former Tasmanian Treasurer, Hon Dr. David Crean.



**Dr Mike Vertigan AC** is the recently appointed Chair of the Tasmanian Polytechnic Board. He was Chancellor of the University of Tasmania from 1998 to 2006.

Dr Vertigan is the current chairman of Tasmanian Perpetual Trustees and Agest Superannuation Fund and a member of the Higher Education Endowment Fund Advisory Board. He is also Director of Eraring Energy in NSW.

He is a former Secretary of the Department of Treasury and Finance in Victoria, and Secretary of the Department of Treasury and Finance in Tasmania.



**Nigel Tanner**, Director of BTLi Pty Ltd is a highly experienced consultant and trainer of consultants. He has a BA with a major in Organisational Behaviour from the University of Tasmania and an MEd in the management of change from the University of London where he was one of two Australian Commonwealth Relations Trust Fellows in 1981/82. He has worked in senior management positions and as an internal and external consultant in both the public and the private sectors. He has worked extensively across the Asia-Pacific Region, in North America and Europe in the areas of strategy implementation, leadership and influencing skills, culture change, change leadership and high performance team development. He is an Accredited Organisational Cultural Transformation Consultant (Richard Barrett & Associates). Nigel's clients include the World Bank (East Timor); the Australian, Queensland, Victorian and NZ Governments; American Express in New York, CIBA Vision Global Business Leadership Team, Hewlett Packard, St George Bank and Honeywell.



**Lee-Anne Fisher** is the Manager - Policy and Projects for the education and training team at the Australian Industry Group (AiGroup). She is responsible for a number of national AiGroup projects with current work centring on the skilling of the existing workforce, skilling for innovation and emerging technologies. This complements ongoing AiGroup work around entry level training. Lee-Anne previously held senior roles with the Australian National Training Authority and with the Queensland training department.



**Dr Damian Blake** is senior lecturer and researcher in the School of Education at Deakin University, Victoria. He has over twenty years experience teaching and researching in the areas of post-compulsory education and training, with a particular focus on the use of applied learning across the education and training sectors. His current research includes investigations into the recent applied learning reforms in Victoria and teachers' professional learning required to support applied learning. Damian is also the course coordinator for the Graduate Diploma of Education (Applied Learning) at Deakin University.



**Dr Tom Karmel** is Managing Director, National Centre for Vocational Education Research (NCVER). Dr Karmel took up the position of Managing Director, NCVER in August 2002. Prior to this he held senior appointments in the Federal government areas of education, employment, labour market research and the Bureau of Statistics. His research interests have centered on the labour market and the economics of education and he has a particular interest in performance indicators both in higher education and vocational education and training. Currently, he is President of the Economics Society of Australia, South Australia branch.



**Eric Sidoti** has been actively engaged in public policy development, strategic planning and communications throughout his career. For over a decade, prior to his appointment as Director at the Whitlam Institute, Eric has managed Strategic Options, his own small consultancy. This enabled him to develop long-term relationships with a small number of clients, principally the Dusseldorp Skills Forum and the Australian Red Cross. He has been intimately involved in education, training and employment policy initiatives focussing particularly on youth participation and the transition from school to independence. Eric was the Executive Director of the Human Rights Council of Australia (HRCA) 1992 - 1995, Communications Director of Amnesty International Australia 1987 - 1992 and National Secretary of the Catholic Commission for Justice and Peace 1985-1987.



**Professor Brian Caldwell** is Managing Director of Melbourne-based Educational Transformations Pty Ltd and professorial fellow at the University of Melbourne where he was dean of education from 1998 to 2004. He was dean of education at the University of Tasmania in 1989 and 1990. He serves as Associate Director (Global) of the International Networking for Educational Transformation (iNet) project of the London-based Specialist Schools and Academies Trust. He has undertaken professional assignments of one kind or another in 38 countries and has served as a consultant in most Australian states and at the national level. His books have helped shape the reform of education in several countries with *Why Not the Best Schools* to be published later this year. He is Deputy Chair of the board of the Australian Council for Educational Research.



**Andrew Fuller** has recently been described as an "interesting mixture of Billy Connolly, Tim Winton and Frasier Crane" and as someone who "puts the heart back into psychology". As a clinical psychologist, Andrew Fuller works with many schools and communities in Australia and internationally, specialising in the wellbeing of young people and their families. He is a Fellow of the Department of Psychiatry and the Department of Learning and Educational Development at the University of Melbourne.

Andrew has been a principal consultant to the national drug prevention strategy REDi, the ABC on children's television shows, is an Ambassador for Mind Matters and is a member of the National Coalition Against Bullying.



**Patrick Wright** is an Adjunct Associate Professor of Labour Studies in the Australian Institute for Social Research at the University of Adelaide. He has taught in secondary schools, technical colleges, community colleges, CAEs and Universities. Based on his work with the Workers Educational Association of SA and the Trade Union Training Authority in the 1980s, he helped found the Associate Diploma of Labour Studies, an adult entry program, at SACAE. By the mid-1990s, the program had grown to include a Bachelor of Labour Studies and a suite of postgraduate coursework awards at the University of Adelaide. Patrick is Deputy Chair of South Australia's Training and Skills Commission and Chair of its Adult Community Education Reference Group. He is also Chair of the Senior Secondary Assessment Board of South Australia.



**Jill Downing** is a lecturer at the University of Tasmania, specialising in the Bachelor of Adult and Vocational Education (BAVE) course. Jill has also worked extensively with Australian training packages, with over 10 years of experience working as a trainer, assessor and compliance officer for a variety of registered training organisations. Jill has also worked as a corporate training and management consultant, basing herself in Singapore for several years and developing and delivering programs for multi-national companies operating throughout the Asia-Pacific region. While in Asia, she also delivered and assessed a Cambridge University trainer accreditation course. Her passion is for improving the quality of teaching in adult learning contexts.

## THE NEW POLYTECHNIC EDUCATION - **why? what? how?**

### DAY I

Thursday 8 May 2008			
8.30am	REGISTRATION AND COFFEE ON ARRIVAL		
10.00	WELCOME AND INTRODUCTION Jules Carroll, Project Manager, Tasmania Tomorrow		Century Room (Level 1)
10.10	OPENING David Bartlett MP, Deputy Premier of Tasmania, Minister for Education and Skills, Minister for Planning and Workplace Relations		Century Room (Level 1)
10.40	KEYNOTE ADDRESS 1 Dr Mike Vertigan AC, Chair, Tasmanian Polytechnic Board <i>"What's it going to look like and how are we going to get there?"</i>		Century Room (Level 1)
11.00	INTRODUCTION TO TRANSITION PROCESS Nigel Tanner, Director, BTLi		Century Room (Level 1)
11.40	KEYNOTE ADDRESS 2 Lee-Anne Fisher, Manager, Policy and Projects, Education and Training, AiGroup <i>"Skilling - The way forward"</i>		Century Room (Level 1)
12.20pm	Chat Session* Premiership Room (Level 1)	OR	Transition Workshop** Members Bar Function Room (Level 3)
1.00	LUNCH		
1.45	KEYNOTE ADDRESS 3 Dr Damian Blake, Senior Lecturer and Researcher, Faculty of Education, Deakin University <i>"What is applied learning?"</i>		Century Room (Level 1)
2.30	Chat Session* Premiership Room (Level 1)	OR	Transition Workshop** Members Bar Function Room (Level 3)
3.15	KEYNOTE ADDRESS 4 Dr Tom Karmel, Managing Director, NCVET <i>"NCVER research as it relates to the Tasmania Polytechnic"</i>		Century Room (Level 1)
4.00	Chat Session* Premiership Room (Level 1)	OR	Transition Workshop** Members Bar Function Room (Level 3)
4.45	ROVING REPORTERS*** PERSPECTIVES		Century Room (Level 1)
5.00	CLOSE OF DAY I		
7.00	PRE-DINNER DRINKS – HOTEL GRAND CHANCELLOR		
7.30	CONFERENCE DINNER – HARBOUR VIEW ROOM, HOTEL GRAND CHANCELLOR		

DAY 2

Friday 9 May 2008			
8.30am	REGISTRATION AND COFFEE ON ARRIVAL		
9.00	<b>OUTLINE OF DAY 2</b> Jules Carroll, Project Manager, Tasmania Tomorrow		Century Room (Level 1)
9.15	<b>KEYNOTE ADDRESS 5</b> Eric Sidoti, Director, Whitlam Institute, University of Western Sydney <i>"Young people and learning"</i>		Century Room (Level 1)
10.00	Chat Session* Premiership Room (Level 1)	OR	Transition Workshop** Members Bar Function Room (Level 3)
10.45	MORNING TEA		
11.15	<b>KEYNOTE ADDRESS 6</b> Professor Brian Caldwell, Managing Director of Educational Transformations Pty Ltd <i>"Polytechnic education in the 21st century: Reviewing the evidence on a new alignment of education, economy and society"</i>		Century Room (Level 1)
12.00pm	Chat Session* Premiership Room (Level 1)	OR	Transition Workshop** Members Bar Function Room (Level 3)
12.45	LUNCH		
1.30	<b>CONCURRENT PRESENTATIONS</b>		
	<b>Presentation – Andrew Fuller</b> Clinical Psychologist and Fellow of the Department of Psychiatry and the Department of Learning and Educational Development at the University of Melbourne <i>Engaging tricky adolescence</i>		Century Room (Level 1)
	2:15 Followed by Chat Session*		
	<b>Presentation – Patrick Wright</b> Adjunct Associate Professor of Labour Studies, Australian Institute for Social Research, University of Adelaide <i>Working with adults returning to learning and earning</i>		Premiership Room (Level 1)
	2:15 Followed by Chat Session*		
	<b>Presentation – Jill Downing</b> Lecturer in Education, Bachelor of Adult and Vocational Education, University of Tasmania <i>Diploma, advanced diploma and beyond - an approach to higher level qualifications</i>		Members Bar Function Room (Level 3)
2:15 Followed by Chat Session*			
3.00	AFTERNOON TEA		
3.15	<b>PLENARY SESSION</b> ROVING REPORTERS*** PERSPECTIVES TRANSITION WORKSHOP OUTCOMES <i>"Where to next"</i>		Century Room (Level 1)
4.00	CONFERENCE WRAP UP AND CLOSE		

## THE NEW POLYTECHNIC EDUCATION - why? what? how?

### **\*Chat Sessions**

The conference is designed so that there is an opportunity for delegates to actively participate in each session.

This participation takes the form of “chat sessions” or professional conversations after speakers have stimulated your thinking.

The conversations will take place in small groups of 6-10, and will be guided by prompt questions provided by speakers. These sessions will provide opportunities for delegates to:

- clarify their understanding and share their responses;
- take time to collaborate with each other; think, analyse and plan;
- develop new strategies and make recommendations and suggestions;
- raise issues and questions.

### **\*\*Transition Workshops**

This process will be repeated throughout the conference and will be facilitated by Nigel Tanner, Managing Partner, BTLi.

It will look at the transition process for people involved in the shift to polytechnic education.

Delegates can choose to attend one of these workshops over the two day conference. Numbers for each workshop will be limited to 50.

### **\*\*\*Roving Reporters**

A team of Roving Reporters will also provide feedback on the chat sessions at various points in the conference, and will make recommendations based on their observations at the final plenary session.



Tasmania  
Explore the possibilities

<http://tomorrow.education.tas.gov.au>